



**CÉCS**

CONSEIL ÉCONOMIQUE ET COOPÉRATIF  
DE LA SASKATCHEWAN



## **FINAL REPORT**

Réseau associatif et institutionnel  
fransaskois (RAIF)

Second edition / 2021-2023

Produced by



ETUDE ECONOMIQUE CONSEIL

March 2025

# **SOCIO-ECONOMIC IMPACT STUDY**







# Table of Contents

## A word from the Executive Director ..... 4

## 1 About the Réseau associatif et institutionnel fransaskois..... 5

## 2 Study objectives ..... 6

## 3 Stages of impact study process ..... 6

### 3.1 STEP 1: Selecting organizations to contact ..... 7

### 3.2 STEP 2: Sending files to compile and provide information (financial and non-financial) to calculate the socio-economic impact and benefits ... 7

### 3.3 STEP 3: Processing the information received..... 7

## 4 Results..... 8

### 4.1 Level of responses obtained ..... 8

#### 4.2.1 Methodological reminder ..... 9

### 4.3 Information on income statements and financial structures requested from RAIF members ..... 11

### 4.4 Economic impact of 22 RAIF member organizations ..... 12

### 4.5 Economic and social benefits..... 13

#### 4.5.1 Overview of economic gains for 22 RAIF member organizations ..... 13

#### 4.5.2 Socio-economic benefits for 22 RAIF member organizations ..... 13

## 5 Early childhood centres..... 14

## 6 Summary ..... 17

## Appendix: Results by respondent ..... 19

### Assemblée communautaire fransaskoise (ACF) ..... 20

### Association des parents fransaskois (APF).. 21

### Association jeunesse fransaskoise (AJF).... 22

### Coopérative des publications fransaskoises (CPF) ..... 23

### Conseil culturel fransaskois (CCF) ..... 24

### Conseil des écoles fransaskoises (CÉF)..... 25

### Conseil économique et coopératif de la Saskatchewan (CÉCS) ..... 26

### Collège Mathieu ..... 27

### Vitalité 55+ ..... 28

### Communauté des africains francophones de la Saskatchewan (CAFS)..... 29

### Fondation fransaskoise..... 30

### Réseau santé en français de la Saskatchewan (RSFS)..... 31

### Société historique de la Saskatchewan (SHS) ..... 32

### Association communautaire fransaskoise de Moose Jaw (ACFMJ)..... 33

### Association communautaire fransaskoise de Regina (ACFR) ..... 34

### Association communautaire fransaskoise de la Trinité (ACFT)..... 35

### Fédération des francophones de Saskatoon (FFS)..... 36

### Coopérative française Centre éducatif Gard'Amis et Maison éducatif Gard'Amis ..... 37

### Centre éducatif Providence La Petite jungle..... 38

### Centre éducatif Le Tournesol..... 39

### Centre éducatif Les petits pois ..... 40

### Centre éducatif Pomme d'api..... 41

## Acknowledgments..... 42



**Kouamé N'Goandi**  
Executive Director, CÉCS

# A word from the Executive Director

The Conseil économique et coopératif de la Saskatchewan (CÉCS) is pleased to publish the second edition of its Réseau associatif et institutionnel Fransaskois (RAIF) Socio-economic Impact Study.

This study is part of a renewed approach by CÉCS to provide RAIF members with the tools they need to build their capacity and take greater control of their lives, now more than ever.

We once again retained the services of the consulting firm Étude Économique Conseil (EEC Canada), and we appreciate the quality of their work.

This second edition covers the period from 2021 to 2023 and involved more participants than the first edition, increasing from 15 to 22. However, the participation rate remains low! Out of a potential 43 participants, only 22 took part in the study, representing a participation rate of only 51%. We hope that the third edition of the study will involve all RAIF members.

The consultants' conclusions on the economic impact provide ample evidence that "regardless of their source, the resources allocated to member organizations have been reinvested into the Saskatchewan economy. This is evidenced by the benefit ratio (1.36) and jobs created (700 FTE jobs in a typical year)". In terms of socio-economic benefits, the study's conclusions highlight that "by pursuing their missions," the participating organizations "collectively generate socio-economic benefits equivalent to 3.7 times the expenditures they incur. This level of social return strongly justifies the allocation of public funds to these organizations.

What's more, for this second edition of the study, each participating organization will receive a "special report" presenting its economic impact and socio-economic benefits. This will enable each participating organization to freely and easily make use of the study findings.

We would like to thank everyone who took part in this second edition, including community organizations (provincial and regional), educational institutions and early education centres (CÉPEs).

We would like to thank the Assemblée communautaire fransaskoise (ACF) for its assistance raising awareness and mobilizing participants, and the Francophone Affairs Branch (FAB) for its contribution to the English translation of this final study report.

We would also like to thank our funders, Prairies Economic Development Canada (PrairiesCan) and Employment and Social Development Canada (ESDC), for their financial support, which contributes to Francophone economic development in Saskatchewan.





# 1 About the Réseau associatif et institutionnel fransaskois

The Réseau associatif et institutionnel Fransaskois (RAIF) is an ad-hoc designation made up of provincial and regional organizations, Francophone media, French-language educational institutions and Francophone early childhood centres. Many of these organizations receive public funding (federal and/or provincial) to serve Saskatchewan Francophones in various socio-economic sectors. Some have additional independent sources of funding to finance their activities.

## 2 Study objectives

Étude Économique Conseil (EEC Canada) was tasked with carrying out a second edition of the socio-economic impact study of all members of the Réseau associatif et institutionnel Fransaskois (RAIF).

This second socio-economic impact study has two main objectives:

- (i) to confirm the validity of the methods and models developed in the first edition to estimate the economic impact and socio-economic benefits associated with the services offered and provided by RAIF members in support of Saskatchewan's Francophones.
- (ii) to quantify the impact and benefits using the same methodology and the information provided by RAIF members in a more recent round of information-gathering.

A new feature of this year's edition is that each participating organization will receive a separate publication presenting its economic impact and socio-economic benefits. This will reflect the individual reality of these RAIF members and provide each of them with a basis for discussion with their funders or, more generally speaking, with their clients or the community they serve.



## 3 Stages of impact study process

To achieve these objectives, each selected RAIF organization was consulted, and a number of them provided key data and parameters to calculate the socio-economic benefits and impacts.

The following section presents the information obtained (informational targets and results obtained); they mainly concern the financial results or statements for the years 2021, 2022 and 2023, as well as the key indicators specific to each organization for the purposes of calculating socio-economic benefits.

The data gathered and analyzed underwent various processes designed to incorporate them into a Canadian economic input-output model, calibrated by EEC Canada for Saskatchewan, in order to calculate the impact; they were then incorporated into cost benefit analysis models to identify the socio-economic benefits.



### **3.1 STEP 1: Selecting organizations to contact**

At the start of the mandate and in collaboration with EEC Canada, the RAIF selected 43 member organizations<sup>1</sup> from three categories to contribute data, without which it would have been impossible to measure the economic impact or socio-economic benefits. These included approximately:

- 20 provincial organizations
- 12 regional organizations
- 11 early childhood centres (the French abbreviation, CÉPE, will be used in this report)

### **3.2 STEP 2: Sending files to compile and provide information (financial and non-financial) to calculate the socio-economic impact and benefits**

Between May 2024 and October 2024, the 43 selected RAIF members were asked to provide the required data. Several Zoom meetings were held to clarify information requests and verify the information provided.

The data obtained were transposed into the calculation models to estimate the corresponding economic impact and socio-economic benefits.

### **3.3 STEP 3: Processing the information received**

Section 4 presents the results obtained, beginning by contextualizing the scope of the results obtained and the methodology used to calculate the impact and socio-economic benefits..

---

<sup>1</sup> Provincial and regional organizations, Francophone media, French-language educational institutions and Francophone early childhood centres.



## 4 Results

### 4.1 Level of responses obtained

Of the 43 organizations approached, 26 provided the required information (fully, partially or incompletely), while 17 did not participate, either refusing to provide information or not responding to the numerous requests. The scope of this report is limited to the 22 organizations that contributed complete (20) or partial (2) information to the study. For greater clarity, the economic impact and socio-economic benefits will only be estimated on the basis of complete or partial data supplied to EEC Canada by 22 member organizations, and will not include fragmentary data considered insufficient.<sup>2</sup>

PROVINCIAL ORGANIZATIONS (20)	
	11 complete responses
	2 partial responses
	7 implicit refusals
REGIONAL ORGANIZATIONS (12)	
	4 complete responses
	8 implicit refusals
CÉPES (11)	
	5 complete responses
	4 fragmentary responses
	2 refusals

<sup>2</sup> It should be noted that in the first edition, estimates of the socio-economic impact and benefits were based on data from 15 organizations, 9 of which provided complete responses and 6 of which provided partial responses.



## 4.2 Calculating economic benefits

### 4.2.1 Methodological reminder

The method used to calculate the economic impact of RAIF organizations' activities is based on an input-output economic impact model originally developed by Statistics Canada (SC), calibrated and updated by EEC Canada for the Saskatchewan economy.

Initially developed for other French-speaking networks in Canada, the model used by EEC Canada followed a three-stage implementation sequence as described below.

As a first step towards identifying revenues and expenses for a "typical year", the review focused on harmonizing the data recorded in the financial statements of the organizations concerned for the years provided. This step enabled us to establish the annual financial structure by type of expenditure for each participating organization.

Secondly, correspondence was established between the distribution of typical expenditures associated with the organizations' activities and the goods and services of the industries, classified according to the Input-Output Industry Codes (IOIC).

Finally, Statistics Canada's input-output model, calibrated for Saskatchewan, was used to estimate the economic impact in the province.

#### INPUT-OUTPUT ECONOMIC IMPACT MODEL: PRESENTATION

The interprovincial input-output model measures economic activity associated with spending in the Canadian economy. The nature, scale and distribution of economic benefits vary according to the type of expenditure (wages, goods and services) and the sectors in which these funds are spent.

Based on expenditure, the model evaluates the effects on production, value-added components (including wages and salaries and corporate surpluses), expenditure on intermediate products and imports.<sup>3</sup> The interprovincial model evaluates these effects at the provincial level, including detailed effects on interprovincial trade. The model estimates these impacts and breaks them down into:

- **Direct impacts**, i.e. in the sector directly targeted by the expenditure, which measure the initial effects associated with an additional dollar of production in a given industry. "The direct impact on an industry's production corresponds to one dollar of production to meet the change of one dollar of final demand. Associated with this change are the direct impacts on GDP, employment and imports.
- **Indirect impacts**, i.e. in other sectors supplying the former, which measure changes attributable to inter-industry purchasing in response to new demand for intermediate inputs from industries directly affected. This includes purchases for the entire production chain, where each of the products purchased will in turn require the production of various other inputs."
- **Induced impacts** which measure changes in the production of goods and services in response to consumption expenditure induced by household income (i.e. wages) generated by the production of direct and indirect effects."<sup>4</sup>
- The model also estimates government revenues (federal, provincial and municipal) in the form of taxes.

3 Statistics Canada, Industry Accounts Division, Ziad Ghanem, "The Canadian and Inter-Provincial Input-Output Models: The Mathematical Framework," 2005.

4 Statistics Canada, Industry Accounts Division, "Explanatory Notes to the Interprovincial Input-Output Model," 2010.



## ECONOMIC BENEFITS: SCOPE AND LIMITS

Economic benefits describe the extent of economic activity associated with an expenditure in terms of employment and economic output. However, they provide no indication of their contribution to the economy compared with alternative scenarios. Whether it is a highly profitable business project or an environmental disaster, every activity generates positive economic spin-offs. The latter also includes some form of expenditure or consumption of resources. As a result, from a public interest perspective, economic benefits alone cannot be used to judge the appropriateness of funding allocations.

Moreover, all input-output models also have certain limitations linked to the assumptions made and their structure,<sup>56</sup> the most important of which are that:

- the models are not dynamic. The reactions of economic agents to price variations are not included.
- the models do not take economies of scale, technical progress or other supply-side constraints into account. They assume that additional production can be generated without having to “sacrifice” alternative production, which overestimates its real importance.
- the models assume “stable and fixed relationships” between the products of all industries, which is rarely the case for long periods and consequently limits the intertemporal validity of the results obtained.

5 Statistics Canada, Industry Accounts Division, Ziad Ghanem, “The Canadian and Inter-Provincial Input-Output Models: The Mathematical Framework,” 2005.

6 Statistics Canada, Industry Accounts Division, Andreas Trau, “Workshop □ Statistics Canada’s Supply-Use Framework: Input-Output Multipliers and the Input-Output Economic Impact Model,” 2016.



### 4.3 Information on income statements and financial structures requested from RAIF members

As part of this impact study, and for the purposes of calculating the economic impact of the selected organizations, the following table presents the key information requested from them for the years 2021, 2022 and 2023.

Year	
Revenue	
Expenditures	
	Payroll (salaries and benefits)
	Professional fees
	Depreciation of furniture, leasehold or equipment improvements, equipment leases
	Rent
	Communication expenses
	Transport costs
	Advertising and promotional expenses
	Office supplies and other expenses
	Subscriptions, documentation and licence fees
	Interest and bank charges
	Others

Contacted organizations also had the option of providing their financial statements for the corresponding years and working with EEC Canada to categorize their information by type of expenditure to better reflect the Input-Output Industry Codes (IOIC) used to estimate economic benefits.

## 4.4 Economic impact of 22 RAIF member organizations

The following summary shows the results obtained from the organizations that provided the information required to calculate socio-economic spin-offs and benefits.

SUMMARY			
	2021	2022	2023
	Expenditures (total) (CAN\$)	Expenditures (total) (CAN\$)	Expenditures (total) (CAN\$)
RAIF (22 organizations)	59,422,531	64,298,782	66,255,503
ECONOMIC IMPACT			
DIRECT, INDIRECT AND INDUCED IMPACT			
	GDP (total) (CAN\$)	GDP (total) (CAN\$)	GDP (total) (CAN\$)
RAIF (22 organizations)	78,802,440	89,586,807	89,558,413
	FTE jobs	FTE jobs	FTE jobs
RAIF (22 organizations)	696	698	747
	Taxation (CAN\$)	Taxation (CAN\$)	Taxation (CAN\$)
RAIF (22 organizations)	4,890,245	5,559,490	5,557,725
	Ratio (benefits) (GDP/expenditures)	Ratio (benefits) (GDP/expenditures)	Ratio (benefits) (GDP/expenditures)
RAIF (22 organizations)	1.33	1.39	1.35





## 4.5 Economic and social benefits

### 4.5.1 Overview of economic gains for 22 RAIF member organizations

The resources committed to the activities of RAIF member organizations reflect the effort they devote to pursuing the objectives enshrined in their respective missions. Indicators for measuring the achievement of results provide a clearer picture of what these organizations' actions have achieved.

Each RAIF member organization and institution was asked to provide information on the wording of one or more objectives, the indicators used to measure their success, and the specific parameters quantifying them. It should be noted that, given the distinct missions of each RAIF member, the objectives pursued, the indicators for measuring the success of these objectives and the ways in which they are measured vary substantially.

No one is in a better position than the managers of these organizations to describe, in their own language, their mission and the indicators that should be tracked to assess its success.

### 4.5.2 Socio-economic benefits for 22 RAIF member organizations

The quantification of economic gains for the 22 organizations<sup>7</sup> that provided full or partial information is presented on a consolidated basis in the following table.

SUMMARY			
SOCIO-ECONOMIC BENEFITS			
	2021	2022	2023
	Benefits (total) (CAN\$)	Benefits (total) (CAN\$)	Benefits (total) (CAN\$)
RAIF (22 organizations)	219,925,277	222,391,260	243,020,198
	Ratio (socio-economic benefits/ expenditures)	Ratio (socio-economic benefits/ expenditures)	Ratio (socio-economic benefits/ expenditures)
RAIF (22 organizations)	3.6	3.5	3.7

<sup>7</sup> Calculations for 20 of the 22 organizations are based on a detailed estimate of the economic benefits for them. The early childhood centres (CÉPEs) had difficulty providing the information needed to produce estimates for this study with any degree of accuracy.

## 5 Early childhood centres

In the first edition, early childhood centres (CÉPEs) had difficulty providing the information required to produce estimates for this study with a sufficient degree of accuracy. For this second edition, EEC Canada, in collaboration with the CÉCS, wanted to lighten the load for the CÉPEs and dedicated a resource person to help them provide the information needed to calculate their socio-economic impact and benefits. In this edition, 5 CÉPEs have provided complete data and will each receive a personalized calculation appendix. These CÉPEs are as follows:

NAME OF CÉPE	LOCATION	NO. OF SPACES	MANDATE
<b>Coopérative française Centre éducatif Gard'Amis et Maison éducative Gard'Amis</b>	Regina	71 spaces	La Centre éducatif Gard'amis French co-operative is a charitable organization incorporated under Saskatchewan's Co-operatives Act to provide French-language daycare services that promote the child's overall development. Its trained and committed staff offer creative and stimulating programming in a safe and welcoming environment. The cooperative contributes to a strong and vibrant Fransaskois community.
<b>Centre éducatif La Petite jungle (CÉ Providence)</b>	Vonda	23 spaces	Centre éducatif Providence Inc. (the Centre) is a Francophone educational centre accredited by the Saskatchewan Ministry of Education. The Centre is authorized to welcome 27 children aged 6 weeks to 5 years of age from the communities of Vonda, St. Denis, Prudhomme, Aberdeen, Cudworth and Dana.
<b>Centre éducatif Le Tournesol</b>	Gravelbourg	22 spaces	Licensed Francophone daycare centre providing care and supervision for up to 28 children aged 6 weeks to 12 years of age. Childcare subsidy accepted.
<b>Centre éducatif Les petits pois</b>	Bellevue	20 spaces	Licensed Francophone daycare centre providing care and supervision for up to 20 children aged 6 weeks to 12 years of age. Childcare subsidy accepted.
<b>Centre éducatif Pomme d'Api</b>	Moose Jaw	28 spaces	Our centre offers 28 full-time, government-subsidized spaces. We are located in the heart of Moose Jaw in the École Ducharme community centre.



Among the problems encountered and mentioned were high staff turnover, early childhood training and French language skills. At the same time, many face financial challenges in their quest for financial stability, particularly for CÉPEs located in the province's French-language schools.

To fully calculate the socio-economic impact and other benefits of CÉPEs, we need to document the following indicators, the most significant of which are:

- **For the community and families**

SECTION	INDICATOR(S)
More women in the workforce	Rate of employed women (with young children)
A rise in personal disposable income for households with young children	Household disposable income statistics Reduction in inequality and poverty
Improving children's well-being and their ability to learn throughout their lives	School dropout rate Assessment of social skills, general knowledge and communication skills (cognitive and language development skills) at the time of school entry Delinquency and crime rates
An increase in the birth rate	Fertility rate for women
An improved picture of community economic and social development	Median household income statistics

- **For governments**

SECTION	INDICATOR(S)
Cost-benefit analysis for funding	Return on investment per dollar invested
A rise in personal disposable income for households with young children	Additional income tax collected due to increased participation of women + creation of new jobs







In the United States, the Biden's administration's 2021 proposal for a US\$200 billion federal program that would help set up free preschool services for 5.2 million 3- and 4 year-olds over 10 years<sup>8</sup> was the subject of a cost-benefit analysis. The main results were as follows:

- Cost-benefit ratios increase materially with the passage of time, clearly demonstrating that, over a 35-year cycle, public investments in CÉPEs at the start of the cycle are more than offset by the corresponding economic benefits (the ratio is 1.01 over a 10-year period compared with 4.93 over 35 years). This phenomenon is even clearer when examining this ratio for pivotal years in the 35-year cycle: it is 1.68 at year 10 and 10.1 at year 35.
- Of particular interest from a public finance point of view, this study shows that by year 10, the "tax revenue"/program cost ratio is "1"; in other words, the program generates as much public revenue as it costs the federal treasury. This ratio rises to 2.84 in year 35 and averages 1.51 over the 35-year period.
- In addition to the impact on economic growth, employment and public finances, the economic and social benefits are numerous and well documented.

The *mutatis mutandis* application of these cost-benefit ratios to CÉPEs that have provided data to EEC Canada will appear on the individual sheets supplied to them.

---

8 Lynch, Robert. "A cost-benefit analysis of The American Families Plan's proposed investment in a nationwide public preschool program," Washington Center for Equitable Growth, September 2021.



## 6 Summary

By way of conclusion, for the 22 RAIF members who provided complete or partial data, the economic benefits and socio-economic impact for a typical year from 2021 to 2023 are shown in the following table:

RESULTS FOR A TYPICAL YEAR (2021-2023)	
	Expenditures (total) (CAN\$)
RAIF (22 organizations)	63,000,000
ECONOMIC IMPACT	
DIRECT, INDIRECT AND INDUCED IMPACT	
	GDP (total) (CAN\$)
RAIF (22 organizations)	86,000,000
	FTE jobs
RAIF (22 organizations)	700
	Taxation (CAN\$)
RAIF (22 organizations)	5,200,000
	Ratio (benefits) (GDP/expenditures)
RAIF (22 organizations)	1.36
SOCIO-ECONOMIC BENEFITS	
	Benefits (total) (CAN\$)
RAIF (22 organizations)	225,000,000
	Ratio (socio-economic benefits/expenditures)
RAIF (22 organizations)	3.7

This study shows that regardless of their source, the resources allocated to member organizations have been reinvested into the Saskatchewan economy. This is as evidenced by the benefits ratio (1.36) and the jobs created (700 FTE jobs<sup>9</sup> in a typical year). Most importantly, however, by pursuing their missions, these organizations collectively generate socio-economic benefits equivalent to 3.7 times the expenditures they incur. This level of social return strongly justifies the allocation of public funds to these organizations.

The scope of this type of calculation, and the analysis of the results, is a valuable source of information for organizations in organizing, supporting and developing their actions in support of the French-speaking communities they serve and in establishing productive dialogue with their funders. The lack of data, especially data based on indicators applicable to the fields of action of the organizations concerned, is of paramount importance when it comes to establishing the credibility and relevance of the arguments presented in requests for support and funding.

In this sense, greater participation by organizations in a third edition of the Réseau associatif francsaskois Socio-economic Impact Study is all the more important for the entire Francsaskois community.

Many of the initiatives, projects and programs of RAIF member organizations require the mobilization of new resources in addition to those typically allocated. Similarly, to reduce or even eliminate the waiting lists for spaces in the province's francophone early childhood education centres, the CÉPEs need to invest additional sums that will help limit the assimilation phenomenon.

More active participation by these organizations in a future edition of the impact study would make it possible to better measure the socio-economic benefits resulting from the use of resources already allocated to them, and would open the door to an increase in these resource allocations.

---

9 FTE refers to the number of full-time equivalent jobs. In the case of this report, it also includes the number of full-time equivalent volunteers.





# **Appendix:** **Results by** **respondent**

# Assemblée communautaire fransaskoise (ACF)



The results of the Assemblée communautaire fransaskoise (ACF) socio-economic impact and benefits measurements are presented in the table below:

<b>KEY ACTIVITY/MISSION</b>	The Assemblée communautaire fransaskoise (ACF) is the main spokesperson for the French-speaking community in Saskatchewan. The ACF's influence enables it to ensure the development of the Fransaskois community and defend its interests.	
<b>GEOGRAPHIC COVERAGE</b>	All of Saskatchewan	
<b>2021</b>	<b>2022</b>	<b>2023</b>
<b>Expenditures (total) (CAN\$)</b>	<b>Expenditures (total) (CAN\$)</b>	<b>Expenditures (total) (CAN\$)</b>
2,553,512	2,645,232	2,975,247
<b>ECONOMIC IMPACT</b>		
<b>DIRECT, INDIRECT AND INDUCED IMPACT</b>		
<b>GDP (total) (CAN\$)</b>	<b>GDP (total) (CAN\$)</b>	<b>GDP (total) (CAN\$)</b>
3,797,443	3,030,308	4,317,902
<b>FTE jobs</b>	<b>FTE jobs</b>	<b>FTE jobs</b>
44	30	44
<b>Taxation (CAN\$)</b>	<b>Taxation (CAN\$)</b>	<b>Taxation (CAN\$)</b>
235,658	188,052	267,956
<b>Ratio (benefits) (GDP/expenditures)</b>	<b>Ratio (benefits) (GDP/expenditures)</b>	<b>Ratio (benefits) (GDP/expenditures)</b>
1.49	1.15	1.45
<b>SOCIO-ECONOMIC BENEFITS</b>		
<b>2021</b>	<b>2022</b>	<b>2023</b>
<b>Benefits (total) (CAN\$)</b>	<b>Benefits (total) (CAN\$)</b>	<b>Benefits (total) (CAN\$)</b>
7,022,158	6,136,938	10,472,869
<b>Ratio (socio-economic benefits/expenditures)</b>	<b>Ratio (socio-economic benefits/expenditures)</b>	<b>Ratio (socio-economic benefits/expenditures)</b>
2.75	2.32	3.52

- This study shows that regardless of their source, the resources allocated to the Assemblée communautaire fransaskoise have been reinvested into the Saskatchewan economy. This is evidenced by benefit ratios ranging from 1.49 to 1.45 over the 3-year period from 2021 to 2023, and by the creation of 40 FTE jobs annually over the same period. Most importantly, by pursuing its mission, the Assemblée communautaire fransaskoise has generated socio-economic benefits equivalent to nearly 2.9 times the expenditures it incurs. This level of social return strongly justifies the allocation of public funds to the Assemblée communautaire fransaskoise.



The results of the Association des parents fransaskois (APF) socio-economic impact and benefits measurement are presented in the table below:

<b>KEY ACTIVITY/MISSION</b>	The mission of the Association des parents fransaskois (APF) is to provide services to welcome, support and promote the interests of parents in order to promote family development in French.	
<b>GEOGRAPHIC COVERAGE</b>	All of Saskatchewan	
<b>2021</b>	<b>2022</b>	<b>2023</b>
<b>Expenditures (total) (CAN\$)</b>	<b>Expenditures (total) (CAN\$)</b>	<b>Expenditures (total) (CAN\$)</b>
641,359	613,529	750,939
<b>ECONOMIC IMPACT</b>		
<b>DIRECT, INDIRECT AND INDUCED IMPACT</b>		
<b>GDP (total) (CAN\$)</b>	<b>GDP (total) (CAN\$)</b>	<b>GDP (total) (CAN\$)</b>
787,178	857,409	1,072,252
<b>FTE jobs</b>	<b>FTE jobs</b>	<b>FTE jobs</b>
6	7	9
<b>Taxation (CAN\$)</b>	<b>Taxation (CAN\$)</b>	<b>Taxation (CAN\$)</b>
48,850	53,208	66,541
<b>Ratio (benefits) (GDP/expenditures)</b>	<b>Ratio (benefits) (GDP/expenditures)</b>	<b>Ratio (benefits) (GDP/expenditures)</b>
1.23	1.40	1.43
<b>SOCIO-ECONOMIC BENEFITS</b>		
<b>2021</b>	<b>2022</b>	<b>2023</b>
<b>Benefits (total) (CAN\$)</b>	<b>Benefits (total) (CAN\$)</b>	<b>Benefits (total) (CAN\$)</b>
1,968,972	2,932 669	3,874,845
<b>Ratio (socio-economic benefits/ expenditures)</b>	<b>Ratio (socio-economic benefits/ expenditures)</b>	<b>Ratio (socio-economic benefits/ expenditures)</b>
3.07	4.78	5.16

- This study shows that regardless of their source, the resources allocated to the Association des parents fransaskois have been reinvested into the Saskatchewan economy. This is evidenced by benefit ratios ranging from 1.23 to 1.43 over the 3-year period from 2021 to 2023, and by the creation of approximately 8 FTE jobs annually over the same period. Most importantly, by pursuing its mission, the Association des parents fransaskois has generated socio-economic benefits equivalent to nearly 4.4 times the expenditures it incurs. This level of social return strongly justifies the allocation of public funds to the Association des parents fransaskois.

The results of the Association jeunesse fransaskoise (AJF) and socio-economic impact and benefits measurement are presented in the table below:

<b>KEY ACTIVITY/MISSION</b>	The Association jeunesse fransaskoise (AJF) is a non-profit organization working in the French-language youth sector throughout Saskatchewan. It organizes French-language activities young people aged 12 to 25.	
<b>GEOGRAPHIC COVERAGE</b>	All of Saskatchewan	
<b>2021</b>	<b>2022</b>	<b>2023</b>
<b>Expenditures (total) (CAN\$)</b>	<b>Expenditures (total) (CAN\$)</b>	<b>Expenditures (total) (CAN\$)</b>
670,483	826,212	1,127,991
<b>ECONOMIC IMPACT</b>		
<b>DIRECT, INDIRECT AND INDUCED IMPACT</b>		
<b>GDP (total) (CAN\$)</b>	<b>GDP (total) (CAN\$)</b>	<b>GDP (total) (CAN\$)</b>
956,877	929,963	1,580,626
<b>FTE jobs</b>	<b>FTE jobs</b>	<b>FTE jobs</b>
11	9	17
<b>Taxation (CAN\$)</b>	<b>Taxation (CAN\$)</b>	<b>Taxation (CAN\$)</b>
59,381	57,711	98,089
<b>Ratio (benefits) (GDP/expenditures)</b>	<b>Ratio (benefits) (GDP/expenditures)</b>	<b>Ratio (benefits) (GDP/expenditures)</b>
1.43	1.13	1.40
<b>SOCIO-ECONOMIC BENEFITS<sup>10</sup></b>		
<b>2021</b>	<b>2022</b>	<b>2023</b>
<b>Benefits (total) (CAN\$)</b>	<b>Benefits (total) (CAN\$)</b>	<b>Benefits (total) (CAN\$)</b>
2,339,986	2,800,859	4,038,208
<b>Ratio (socio-economic benefits/ expenditures)</b>	<b>Ratio (socio-economic benefits/ expenditures)</b>	<b>Ratio (socio-economic benefits/ expenditures)</b>
3.49	3.39	3.58

- This study shows that regardless of their source, the resources allocated to the AJF have been reinvested into the Saskatchewan economy. This is evidenced by benefit ratios ranging from 1.43 to 1.40 over the 3-year period from 2021 to 2023, and by the creation of approximately 13 FTE jobs annually over the same period. Most importantly, by pursuing its mission, the Association jeunesse fransaskoise has generated socio-economic benefits equivalent to nearly 3.5 times the expenditures it incurs. This level of social return strongly justifies the allocation of public funds to the Association jeunesse fransaskoise.

<sup>10</sup> These socio-economic benefits are estimated using the weighted average of the ratios obtained from the RAIF members who provided detailed information to calculate their socio-economic impact.

The following table presents the results of the socio-economic impact of the Coopérative des publications fransaskoises (CPF):

<b>KEY ACTIVITY/MISSION</b>	Incorporated as a co-operative in 1987, the Coopérative des publications fransaskoises (CPF) has a mission to work towards the development of the Fransaskois community using the means of communication available to it, with particular emphasis on print media and information technology.	
<b>GEOGRAPHIC COVERAGE</b>	All of Saskatchewan	
<b>2021</b>	<b>2022</b>	<b>2023</b>
<b>Expenditures (total) (CAN\$)</b>	<b>Expenditures (total) (CAN\$)</b>	<b>Expenditures (total) (CAN\$)</b>
415,706	429,521	448,912
<b>ECONOMIC IMPACT</b>		
<b>DIRECT, INDIRECT AND INDUCED IMPACT</b>		
<b>GDP (total) (CAN\$)</b>	<b>GDP (total) (CAN\$)</b>	<b>GDP (total) (CAN\$)</b>
459,501	476,197	503,182
<b>FTE jobs</b>	<b>FTE jobs</b>	<b>FTE jobs</b>
7	6	6
<b>Taxation (CAN\$)</b>	<b>Taxation (CAN\$)</b>	<b>Taxation (CAN\$)</b>
28,515	29,551	31,226
<b>Ratio (benefits) (GDP/expenditures)</b>	<b>Ratio (benefits) (GDP/expenditures)</b>	<b>Ratio (benefits) (GDP/expenditures)</b>
1.11	1.11	1.12
<b>SOCIO-ECONOMIC BENEFITS<sup>11</sup></b>		
<b>2021</b>	<b>2022</b>	<b>2023</b>
<b>Benefits (total) (CAN\$)</b>	<b>Benefits (total) (CAN\$)</b>	<b>Benefits (total) (CAN\$)</b>
1,450,814	1,456,076	1,607,105
<b>Ratio (socio-economic benefits/ expenditures)</b>	<b>Ratio (socio-economic benefits/ expenditures)</b>	<b>Ratio (socio-economic benefits/ expenditures)</b>
3.49	3.39	3.58

- This study shows that regardless of their source, the resources allocated to the Coopérative des publications fransaskoises have been reinvested into the Saskatchewan economy. This is evidenced by benefit ratios ranging from 1.11 to 1.12 over the 3-year period from 2021 to 2023, and by the creation of approximately 7 FTE jobs annually over the same period. Most importantly, by pursuing its mission, the CPF has generated socio-economic benefits equivalent to nearly 3.5 times the expenditures it incurs. This level of social return strongly justifies the allocation of public funds to the Coopérative des publications fransaskoises.

<sup>11</sup> These socio-economic benefits are estimated using the weighted average of the ratios obtained from the RAIF members who provided detailed information to calculate their socio-economic impact.



<b>KEY ACTIVITY/MISSION</b>	The mission of the Conseil culturel fransaskois (CCF) is to represent and support the development of Saskatchewan's francophone cultural and artistic communities.	
<b>GEOGRAPHIC COVERAGE</b>	All of Saskatchewan	
<b>2021</b>	<b>2022</b>	<b>2023</b>
<b>Expenditures (total) (CAN\$)</b>	<b>Expenditures (total) (CAN\$)</b>	<b>Expenditures (total) (CAN\$)</b>
931,591	1,239,726	1,154,957
<b>ECONOMIC IMPACT</b>		
<b>DIRECT, INDIRECT AND INDUCED IMPACT</b>		
<b>GDP (total) (CAN\$)</b>	<b>GDP (total) (CAN\$)</b>	<b>GDP (total) (CAN\$)</b>
979,886	1,292,469	1,225,650
<b>FTE jobs</b>	<b>FTE jobs</b>	<b>FTE jobs</b>
8	12	12
<b>Taxation (CAN\$)</b>	<b>Taxation (CAN\$)</b>	<b>Taxation (CAN\$)</b>
60,809	80,207	76,060
<b>Ratio (benefits) (GDP/expenditures)</b>	<b>Ratio (benefits) (GDP/expenditures)</b>	<b>Ratio (benefits) (GDP/expenditures)</b>
1.05	1.04	1.06
<b>SOCIO-ECONOMIC BENEFITS</b>		
<b>2021</b>	<b>2022</b>	<b>2023</b>
<b>Benefits (total) (CAN\$)</b>	<b>Benefits (total) (CAN\$)</b>	<b>Benefits (total) (CAN\$)</b>
3,540,046	4,710,959	4,388,837
<b>Ratio (socio-economic benefits/ expenditures)</b>	<b>Ratio (socio-economic benefits/ expenditures)</b>	<b>Ratio (socio-economic benefits/ expenditures)</b>
3.80	3.80	3.80

- This study shows that regardless of their source, the resources allocated to the Fonds Conseil culturel fransaskois have been reinvested into the Saskatchewan economy. This is evidenced by benefit ratios ranging from 1.05 to 1.06 over the 3-year period from 2021 to 2023, by the creation of approximately 11 FTE jobs annually over the same period. Most importantly, by pursuing its mission, the Fonds Conseil culturel fransaskois has generated socio-economic benefits equivalent to nearly 3.8 times the expenditures it incurs. This level of social return strongly justifies the allocation of public funds to the Fonds Conseil culturel fransaskois.

<b>KEY ACTIVITY/MISSION</b>	With its schools of excellence in French as a first language, the Conseil des écoles fransaskoises (CÉF) offers a healthy and welcoming environment that prepares students for their educational, identity and cultural success.	
<b>GEOGRAPHIC COVERAGE</b>	All of Saskatchewan	
<b>2021</b>	<b>2022</b>	<b>2023</b>
<b>Expenditures (total) (CAN\$)</b>	<b>Expenditures (total) (CAN\$)</b>	<b>Expenditures (total) (CAN\$)</b>
42,978,569	46,524,918	46,958,393
<b>ECONOMIC IMPACT</b>		
<b>DIRECT, INDIRECT AND INDUCED IMPACT</b>		
<b>GDP (total) (CAN\$)</b>	<b>GDP (total) (CAN\$)</b>	<b>GDP (total) (CAN\$)</b>
56,574,990	69,202,358	65,433,914
<b>FTE jobs</b>	<b>FTE jobs</b>	<b>FTE jobs</b>
464	496	491
<b>Taxation (CAN\$)</b>	<b>Taxation (CAN\$)</b>	<b>Taxation (CAN\$)</b>
3,510,874	4,294,491	4,060,633
<b>Ratio (benefits) (GDP/expenditures)</b>	<b>Ratio (benefits) (GDP/expenditures)</b>	<b>Ratio (benefits) (GDP/expenditures)</b>
1.32	1.49	1.39
<b>SOCIO-ECONOMIC BENEFITS</b>		
<b>2021</b>	<b>2022</b>	<b>2023</b>
<b>Benefits (total) (CAN\$)</b>	<b>Benefits (total) (CAN\$)</b>	<b>Benefits (total) (CAN\$)</b>
151,714,349	158,649,970	169,519,799
<b>Ratio (socio-economic benefits/ expenditures)</b>	<b>Ratio (socio-economic benefits/ expenditures)</b>	<b>Ratio (socio-economic benefits/ expenditures)</b>
3.53	3.41	3.61

- This study shows that regardless of their source, the resources allocated to the Conseil des écoles fransaskoises have been reinvested into the Saskatchewan economy. This is evidenced by benefit ratios ranging from 1.32 to 1.39 over the 3-year period from 2021 to 2023, and by the creation of approximately 484 FTE jobs annually over the same period. Most importantly, by pursuing its mission, the Conseil des écoles fransaskoises has generated socio-economic benefits equivalent to nearly 3.5 times the expenditures it incurs. This level of social return strongly justifies the allocation of public funds to the Conseil des écoles fransaskoises.

<b>KEY ACTIVITY/MISSION</b>	The mission of the Conseil économique et coopératif de la Saskatchewan (CÉCS) is to provide the community with the expertise and tools it needs to contribute to viable and sustainable economic development.	
<b>GEOGRAPHIC COVERAGE</b>	All of Saskatchewan	
<b>2021</b>	<b>2022</b>	<b>2023</b>
<b>Expenditures (total) (CAN\$)</b>	<b>Expenditures (total) (CAN\$)</b>	<b>Expenditures (total) (CAN\$)</b>
3,795,212	4,346,489	3,963,488
<b>ECONOMIC IMPACT</b>		
<b>DIRECT, INDIRECT AND INDUCED IMPACT</b>		
<b>GDP (total) (CAN\$)</b>	<b>GDP (total) (CAN\$)</b>	<b>GDP (total) (CAN\$)</b>
5,508,439	4,601,891	5,020,231
<b>FTE jobs</b>	<b>FTE jobs</b>	<b>FTE jobs</b>
55	47	53
<b>Taxation (CAN\$)</b>	<b>Taxation (CAN\$)</b>	<b>Taxation (CAN\$)</b>
341,837	285,580	311,540
<b>Ratio (benefits) (GDP/expenditures)</b>	<b>Ratio (benefits) (GDP/expenditures)</b>	<b>Ratio (benefits) (GDP/expenditures)</b>
1.45	1.06	1.27
<b>SOCIO-ECONOMIC BENEFITS</b>		
<b>2021</b>	<b>2022</b>	<b>2023</b>
<b>Benefits (total) (CAN\$)</b>	<b>Benefits (total) (CAN\$)</b>	<b>Benefits (total) (CAN\$)</b>
11,461,540	13,995,695	11,137,401
<b>Ratio (socio-economic benefits/ expenditures)</b>	<b>Ratio (socio-economic benefits/ expenditures)</b>	<b>Ratio (socio-economic benefits/ expenditures)</b>
3.02	3.22	2.81

- This study shows that regardless of their source, the resources allocated to the Conseil économique et coopératif de la Saskatchewan (CÉCS) have been reinvested into the Saskatchewan economy. This is evidenced by benefit ratios ranging from 1.45 to 1.27 over the 3-year period from 2021 to 2023, and by the creation of approximately 52 FTE jobs over the same period. Most importantly, by pursuing its mission, the CÉCS has generated socio-economic benefits equivalent to around 3 times the expenditures it incurs. This level of social return strongly justifies the allocation of public funds to the CÉCS.





<b>KEY ACTIVITY/MISSION</b>	Collège Mathieu offers vocational and technical training to the Francophone and Francophile population, fostering socio-economic development locally and beyond.	
<b>GEOGRAPHIC COVERAGE</b>	All of Saskatchewan	
<b>2021</b>	<b>2022</b>	<b>2023</b>
<b>Expenditures (total) (CAN\$)</b>	<b>Expenditures (total) (CAN\$)</b>	<b>Expenditures (total) (CAN\$)</b>
2,497,068	2,818,274	3,560,260
<b>ECONOMIC IMPACT</b>		
<b>DIRECT, INDIRECT AND INDUCED IMPACT</b>		
<b>GDP (total) (CAN\$)</b>	<b>GDP (total) (CAN\$)</b>	<b>GDP (total) (CAN\$)</b>
3,216,087	3,097,944	3,759,629
<b>FTE jobs</b>	<b>FTE jobs</b>	<b>FTE jobs</b>
34	32	44
<b>Taxation (CAN\$)</b>	<b>Taxation (CAN\$)</b>	<b>Taxation (CAN\$)</b>
199,581	192,249	233,311
<b>Ratio (benefits) (GDP/expenditures)</b>	<b>Ratio (benefits) (GDP/expenditures)</b>	<b>Ratio (benefits) (GDP/expenditures)</b>
1.29	1.1	1.06
<b>SOCIO-ECONOMIC BENEFITS</b>		
<b>2021</b>	<b>2022</b>	<b>2023</b>
<b>Benefits (total) (CAN\$)</b>	<b>Benefits (total) (CAN\$)</b>	<b>Benefits (total) (CAN\$)</b>
13,733,874	13,189,522	16,341,593
<b>Ratio (socio-economic benefits/ expenditures)</b>	<b>Ratio (socio-economic benefits/ expenditures)</b>	<b>Ratio (socio-economic benefits/ expenditures)</b>
5.50	4.68	4.59

- This study shows that regardless of their source, the resources allocated to Collège Mathieu have been
- reinvested into the Saskatchewan economy. This is evidenced by benefit ratios ranging from 1.29 to 1.06 over
- the 3-year period from 2021 to 2023, and by the creation of approximately 37 FTE jobs annually over the
- same period. Most important, by pursuing its mission, Collège Mathieu has generated socio-economic benefits
- equivalent to 4.9 times the expenditures it incurs. This level of social return strongly justifies the allocation of
- public funds to Collège Mathieu.

<b>KEY ACTIVITY/MISSION</b>	Vitalité 55+ supports Francophones and Francophiles aged 55 and over in Saskatchewan so that they may contribute to the vitality of the Fransaskois community.	
<b>GEOGRAPHIC COVERAGE</b>	All of Saskatchewan	
<b>2021</b>	<b>2022</b>	<b>2023</b>
<b>Expenditures (total) (CAN\$)</b>	<b>Expenditures (total) (CAN\$)</b>	<b>Expenditures (total) (CAN\$)</b>
202,892	312,758	282,429
<b>ECONOMIC IMPACT</b>		
<b>DIRECT, INDIRECT AND INDUCED IMPACT</b>		
<b>GDP (total) (CAN\$)</b>	<b>GDP (total) (CAN\$)</b>	<b>GDP (total) (CAN\$)</b>
282,528	431,935	366,134
<b>FTE jobs</b>	<b>FTE jobs</b>	<b>FTE jobs</b>
3	5	4
<b>Taxation (CAN\$)</b>	<b>Taxation (CAN\$)</b>	<b>Taxation (CAN\$)</b>
17,533	26,805	22,721
<b>Ratio (benefits) (GDP/expenditures)</b>	<b>Ratio (benefits) (GDP/expenditures)</b>	<b>Ratio (benefits) (GDP/expenditures)</b>
1.39	1.38	1.30
<b>SOCIO-ECONOMIC BENEFITS</b>		
<b>2021</b>	<b>2022</b>	<b>2023</b>
<b>Benefits (total) (CAN\$)</b>	<b>Benefits (total) (CAN\$)</b>	<b>Benefits (total) (CAN\$)</b>
716,209	1,066,505	1,019,569
<b>Ratio (socio-economic benefits/ expenditures)</b>	<b>Ratio (socio-economic benefits/ expenditures)</b>	<b>Ratio (socio-economic benefits/ expenditures)</b>
3.53	3.41	3.61

- This study shows that regardless of their source, the resources allocated to Vitalité 55+ have been reinvested into the Saskatchewan economy. This is evidenced by benefit ratios ranging from 1.39 to 1.30 over the 3-year period from 2021 to 2023, and by the creation of approximately 4 FTE jobs annually over the same period.
- Most importantly, by pursuing its mission, Vitalité 55+ has generated socio-economic benefits equivalent to nearly 3.5 times the expenditures it incurs. This level of social return strongly justifies the allocation of public funds to Vitalité 55+.

# Communauté des africains francophones de la Saskatchewan (CAFS)



<b>KEY ACTIVITY/MISSION</b>	The Communauté des africains francophones de la Saskatchewan (CAFS) brings together and supports African Francophones living in Saskatchewan.	
<b>GEOGRAPHIC COVERAGE</b>	All of Saskatchewan	
<b>2021</b>	<b>2022</b>	<b>2023</b>
<b>Expenditures (total) (CAN\$)</b>	<b>Expenditures (total) (CAN\$)</b>	<b>Expenditures (total) (CAN\$)</b>
288,318	310,878	253,670
<b>ECONOMIC IMPACT</b>		
<b>DIRECT, INDIRECT AND INDUCED IMPACT</b>		
<b>GDP (total) (CAN\$)</b>	<b>GDP (total) (CAN\$)</b>	<b>GDP (total) (CAN\$)</b>
370,879	449,973	335,718
<b>FTE jobs</b>	<b>FTE jobs</b>	<b>FTE jobs</b>
3	4	3
<b>Taxation (CAN\$)</b>	<b>Taxation (CAN\$)</b>	<b>Taxation (CAN\$)</b>
23,016	27,924	20,834
<b>Ratio (benefits) (GDP/expenditures)</b>	<b>Ratio (benefits) (GDP/expenditures)</b>	<b>Ratio (benefits) (GDP/expenditures)</b>
1.29	1.45	1.32
<b>SOCIO-ECONOMIC BENEFITS</b>		
<b>2021</b>	<b>2022</b>	<b>2023</b>
<b>Benefits (total) (CAN\$)</b>	<b>Benefits (total) (CAN\$)</b>	<b>Benefits (total) (CAN\$)</b>
1,236,884	1,417,604	1,275,960
<b>Ratio (socio-economic benefits/ expenditures)</b>	<b>Ratio (socio-economic benefits/ expenditures)</b>	<b>Ratio (socio-economic benefits/ expenditures)</b>
4.29	4.56	5.03

- This study shows that regardless of their source, the resources allocated to the Communauté des africains francophones de la Saskatchewan have been reinvested into the Saskatchewan economy. This is evidenced by benefit ratios ranging from 1.29 to 1.32 over the 3-year period from 2021 to 2023, and by the creation of approximately 4 FTE jobs annually over the same period. Most importantly, by pursuing its mission, the Communauté des africains francophones de la Saskatchewan has generated socio-economic benefits equivalent to around 4.6 times the expenditures it incurs. This level of social return strongly justifies the allocation of public funds to the Communauté des africains francophones de la Saskatchewan.



<b>KEY ACTIVITY/MISSION</b>	The Fondation fransaskoise is a registered charitable organization dedicated to providing financial assistance to programs for Fransaskois throughout the province. The interest from its capital fund is used to finance projects, activities and post-secondary education for Fransaskoises and Fransaskois.	
<b>GEOGRAPHIC COVERAGE</b>	All of Saskatchewan	
<b>2021</b>	<b>2022</b>	<b>2023</b>
<b>Expenditures (total) (CAN\$)</b>	<b>Expenditures (total) (CAN\$)</b>	<b>Expenditures (total) (CAN\$)</b>
206,712	106,685	115,866
<b>ECONOMIC IMPACT</b>		
<b>DIRECT, INDIRECT AND INDUCED IMPACT</b>		
<b>GDP (total) (CAN\$)</b>	<b>GDP (total) (CAN\$)</b>	<b>GDP (total) (CAN\$)</b>
325,098	158,240	196,891
<b>FTE jobs</b>	<b>FTE jobs</b>	<b>FTE jobs</b>
4	2	2
<b>Taxation (CAN\$)</b>	<b>Taxation (CAN\$)</b>	<b>Taxation (CAN\$)</b>
20,175	9,820	12,218
<b>Ratio (benefits) (GDP/expenditures)</b>	<b>Ratio (benefits) (GDP/expenditures)</b>	<b>Ratio (benefits) (GDP/expenditures)</b>
1.57	1.48	1.70
<b>SOCIO-ECONOMIC BENEFITS</b>		
<b>2021</b>	<b>2022</b>	<b>2023</b>
<b>Benefits (total) (CAN\$)</b>	<b>Benefits (total) (CAN\$)</b>	<b>Benefits (total) (CAN\$)</b>
613,935	282,715	454,195
<b>Ratio (socio-economic benefits/ expenditures)</b>	<b>Ratio (socio-economic benefits/ expenditures)</b>	<b>Ratio (socio-economic benefits/ expenditures)</b>
2.97	2.65	3.92

- This study shows that regardless of their source, the resources allocated to the Fondation fransaskoise have been reinvested into the Saskatchewan economy. This is evidenced by benefit ratios ranging from 1.57 to 1.70 over the 3-year period from 2021 to 2023, and by the creation of approximately 3 FTE jobs annually over the same period. Most importantly, by pursuing its mission, the Fondation fransaskoise has generated socio-economic benefits equivalent to nearly 3.1 times the expenditures it incurs. This level of social return strongly justifies the allocation of public funds to the Fondation fransaskoise.

<b>KEY ACTIVITY/MISSION</b>	The Réseau santé en français de la Saskatchewan (RSFS) mandate is to promote, protect and improve access to French-language health services in Saskatchewan.	
<b>GEOGRAPHIC COVERAGE</b>	All of Saskatchewan	
<b>2021</b>	<b>2022</b>	<b>2023</b>
<b>Expenditures (total) (CAN\$)</b>	<b>Expenditures (total) (CAN\$)</b>	<b>Expenditures (total) (CAN\$)</b>
580,762	338,553	388,355
<b>ECONOMIC IMPACT</b>		
<b>DIRECT, INDIRECT AND INDUCED IMPACT</b>		
<b>GDP (total) (CAN\$)</b>	<b>GDP (total) (CAN\$)</b>	<b>GDP (total) (CAN\$)</b>
905,667	549,950	603,651
<b>FTE jobs</b>	<b>FTE jobs</b>	<b>FTE jobs</b>
9	6	6
<b>Taxation (CAN\$)</b>	<b>Taxation (CAN\$)</b>	<b>Taxation (CAN\$)</b>
56,203	34,128	37,461
<b>Ratio (benefits) (GDP/expenditures)</b>	<b>Ratio (benefits) (GDP/expenditures)</b>	<b>Ratio (benefits) (GDP/expenditures)</b>
1.56	1.62	1.55
<b>SOCIO-ECONOMIC BENEFITS</b>		
<b>2021</b>	<b>2022</b>	<b>2023</b>
<b>Benefits (total) (CAN\$)</b>	<b>Benefits (total) (CAN\$)</b>	<b>Benefits (total) (CAN\$)</b>
1,846,823	1,286,501	1,549,536
<b>Ratio (socio-economic benefits/ expenditures)</b>	<b>Ratio (socio-economic benefits/ expenditures)</b>	<b>Ratio (socio-economic benefits/ expenditures)</b>
3.18	3.80	3.99

- This study shows that regardless of their source, the resources allocated to the Réseau santé en français de la Saskatchewan (RSFS) have been reinvested into the Saskatchewan economy. This is evidenced by benefit ratios ranging from 1.56 to 1.55 over the 3-year period from 2021 to 2023, and by the creation of approximately 7 FTE jobs annually over the same period. Most importantly, by pursuing its mission, the RSFS has generated socio-economic benefits equivalent to nearly 3.6 times the expenditures it incurs. This level of social return strongly justifies the allocation of public funds to the RSFS.

<b>KEY ACTIVITY/MISSION</b>	The Société historique de la Saskatchewan (SHS) researches, preserves and transmits the history of the Francophone presence in Saskatchewan.	
<b>GEOGRAPHIC COVERAGE</b>	All of Saskatchewan	
<b>2021</b>	<b>2022</b>	<b>2023</b>
<b>Expenditures (total) (CAN\$)</b>	<b>Expenditures (total) (CAN\$)</b>	<b>Expenditures (total) (CAN\$)</b>
428,685	428,453	585,578
<b>ECONOMIC IMPACT</b>		
<b>DIRECT, INDIRECT AND INDUCED IMPACT</b>		
<b>GDP (total) (CAN\$)</b>	<b>GDP (total) (CAN\$)</b>	<b>GDP (total) (CAN\$)</b>
490,995	483,582	685,649
<b>FTE jobs</b>	<b>FTE jobs</b>	<b>FTE jobs</b>
7	6	8
<b>Taxation (CAN\$)</b>	<b>Taxation (CAN\$)</b>	<b>Taxation (CAN\$)</b>
30,470	30,010	42,549
<b>Ratio (benefits) (GDP/expenditures)</b>	<b>Ratio (benefits) (GDP/expenditures)</b>	<b>Ratio (benefits) (GDP/expenditures)</b>
1.15	1.13	1.17
<b>SOCIO-ECONOMIC BENEFITS</b>		
<b>2021</b>	<b>2022</b>	<b>2023</b>
<b>Benefits (total) (CAN\$)</b>	<b>Benefits (total) (CAN\$)</b>	<b>Benefits (total) (CAN\$)</b>
1,586,135	1,585,276	2,166,639
<b>Ratio (socio-economic benefits/ expenditures)</b>	<b>Ratio (socio-economic benefits/ expenditures)</b>	<b>Ratio (socio-economic benefits/ expenditures)</b>
3.70	3.70	3.70

- This study shows that regardless of their source, the resources allocated to the Société historique de la Saskatchewan have been reinvested into the Saskatchewan economy. This is evidenced by benefit ratios ranging from 1.15 to 1.17 over the 3-year period from 2021 to 2023, and by the creation of approximately 7 FTE jobs annually over the same period. Most importantly, by pursuing its mission, the Saskatchewan Historical Society has generated socio-economic benefits equivalent to nearly 3.7 times the expenditures it incurs. This level of social return strongly justifies the allocation of public funds to the Société historique de la Saskatchewan.





<b>KEY ACTIVITY/MISSION</b>	The Association communautaire fransaskoise de Moose Jaw (ACFMJ) was founded in Moose Jaw in October 2001, with a mission to promote the French language and French-Canadian culture, bring together the city and region's Francophones and Francophiles, and foster their overall development at all ages.	
<b>GEOGRAPHIC COVERAGE</b>	Moose Jaw	
<b>2021</b>	<b>2022</b>	<b>2023</b>
<b>Expenditures (total) (CAN\$)</b>	<b>Expenditures (total) (CAN\$)</b>	<b>Expenditures (total) (CAN\$)</b>
104,998	95,449	104,489
<b>ECONOMIC IMPACT</b>		
<b>DIRECT, INDIRECT AND INDUCED IMPACT</b>		
<b>GDP (total) (CAN\$)</b>	<b>GDP (total) (CAN\$)</b>	<b>GDP (total) (CAN\$)</b>
150,296	97,240	111,450
<b>FTE jobs</b>	<b>FTE jobs</b>	<b>FTE jobs</b>
2	1	1
<b>Taxation (CAN\$)</b>	<b>Taxation (CAN\$)</b>	<b>Taxation (CAN\$)</b>
9,327	6,034	6,916
<b>Ratio (benefits) (GDP/expenditures)</b>	<b>Ratio (benefits) (GDP/expenditures)</b>	<b>Ratio (benefits) (GDP/expenditures)</b>
1.43	1.02	1.07
<b>SOCIO-ECONOMIC BENEFITS</b>		
<b>2021</b>	<b>2022</b>	<b>2023</b>
<b>Benefits (total) (CAN\$)</b>	<b>Benefits (total) (CAN\$)</b>	<b>Benefits (total) (CAN\$)</b>
380,093	377,978	443,033
<b>Ratio (socio-economic benefits/ expenditures)</b>	<b>Ratio (socio-economic benefits/ expenditures)</b>	<b>Ratio (socio-economic benefits/ expenditures)</b>
3.62	3.96	4.24

- This study shows that regardless of their source, the resources allocated to the Association communautaire fransaskoise de Moose Jaw have been reinvested into the Saskatchewan economy. This is evidenced by
- benefit ratios ranging from 1.43 to 1.07 over the 3-year period from 2021 to 2023, and by the creation of
- approximately 2 FTE jobs annually over the same period. Most importantly, by pursuing its mission, the
- Association communautaire fransaskoise de Moose Jaw has generated socio economic benefits equivalent to
- approximately 3.9 times the expenditures it incurs. This level of social return strongly justifies the allocation of
- public funds to the Association communautaire fransaskoise de Moose Jaw.

<b>KEY ACTIVITY/MISSION</b>	The Association communautaire fransaskoise de Regina (ACFR) is one of 12 Francophone centres in Saskatchewan, each of which offers French language socio-cultural programming in its respective geographic area.	
<b>GEOGRAPHIC COVERAGE</b>	Regina	
<b>2021</b>	<b>2022</b>	<b>2023</b>
<b>Expenditures (total) (CAN\$)</b>	<b>Expenditures (total) (CAN\$)</b>	<b>Expenditures (total) (CAN\$)</b>
285,918	517,873	341,748
<b>ECONOMIC IMPACT</b>		
<b>DIRECT, INDIRECT AND INDUCED IMPACT</b>		
<b>GDP (total) (CAN\$)</b>	<b>GDP (total) (CAN\$)</b>	<b>GDP (total) (CAN\$)</b>
383,888	722,798	452,757
<b>FTE jobs</b>	<b>FTE jobs</b>	<b>FTE jobs</b>
4	5	5
<b>Taxation (CAN\$)</b>	<b>Taxation (CAN\$)</b>	<b>Taxation (CAN\$)</b>
23,823	44,855	28,097
<b>Ratio (benefits) (GDP/expenditures)</b>	<b>Ratio (benefits) (GDP/expenditures)</b>	<b>Ratio (benefits) (GDP/expenditures)</b>
1.34	1.40	1.32
<b>SOCIO-ECONOMIC BENEFITS<sup>12</sup></b>		
<b>2021</b>	<b>2022</b>	<b>2023</b>
<b>Benefits (total) (CAN\$)</b>	<b>Benefits (total) (CAN\$)</b>	<b>Benefits (total) (CAN\$)</b>
1,009,291	1,765,947	1,233,710
<b>Ratio (socio-economic benefits/ expenditures)</b>	<b>Ratio (socio-economic benefits/ expenditures)</b>	<b>Ratio (socio-economic benefits/ expenditures)</b>
3.53	3.41	3.61

- This study shows that regardless of their source, the resources allocated to the Association communautaire fransaskoise de Regina have been reinvested into the Saskatchewan economy. This is evidenced by benefit ratios ranging from 1.34 to 1.32 over the 3-year period from 2021 to 2023, and by the creation of approximately 5 FTE jobs over the same period. Most importantly, by pursuing its mission, the Association communautaire fransaskoise de Regina has generated socio-economic benefits equivalent to around 3.5 times the expenditures it incurs. This level of social return strongly justifies the allocation of public funds to the Association communautaire fransaskoise de Regina.

<sup>12</sup> These socio-economic benefits are estimated using the weighted average of the ratios obtained from the 9 RAIF members who provided detailed information to calculate their socio-economic impact.

# Association communautaire fransaskoise de la Trinité (ACFT)



<b>KEY ACTIVITY/MISSION</b>	The Association communautaire fransaskoise de la Trinité (ACFT) is a non-profit organization serving the Trinité region (St-Denis, Vonda, Prud'homme and their surroundings), a rural area located just 40 kilometres from Saskatoon.	
<b>GEOGRAPHIC COVERAGE</b>	St-Denis, Vonda, Prud'homme and surroundings	
<b>2021</b>	<b>2022</b>	<b>2023</b>
<b>Expenditures (total) (CAN\$)</b>	<b>Expenditures (total) (CAN\$)</b>	<b>Expenditures (total) (CAN\$)</b>
82,623	64,010	67,070
<b>ECONOMIC IMPACT</b>		
<b>DIRECT, INDIRECT AND INDUCED IMPACT</b>		
<b>GDP (total) (CAN\$)</b>	<b>GDP (total) (CAN\$)</b>	<b>GDP (total) (CAN\$)</b>
102,672	86,139	85,503
<b>FTE jobs</b>	<b>FTE jobs</b>	<b>FTE jobs</b>
1	1	1
<b>Taxation (CAN\$)</b>	<b>Taxation (CAN\$)</b>	<b>Taxation (CAN\$)</b>
6,372	5,346	5,306
<b>Ratio (benefits) (GDP/expenditures)</b>	<b>Ratio (benefits) (GDP/expenditures)</b>	<b>Ratio (benefits) (GDP/expenditures)</b>
1.24	1.35	1.27
<b>SOCIO-ECONOMIC BENEFITS</b>		
<b>2021</b>	<b>2022</b>	<b>2023</b>
<b>Benefits (total) (CAN\$)</b>	<b>Benefits (total) (CAN\$)</b>	<b>Benefits (total) (CAN\$)</b>
237,128	168,986	189,808
<b>Ratio (socio-economic benefits/ expenditures)</b>	<b>Ratio (socio-economic benefits/ expenditures)</b>	<b>Ratio (socio-economic benefits/ expenditures)</b>
2.87	2.64	2.83

- This study shows that regardless of their source, the resources allocated to the Association communautaire fransaskoise de la Trinité have been reinvested into the Saskatchewan economy. This is evidenced by benefit ratios ranging from 1.24 to 1.27 over the 3-year period from 2021 to 2023, and by the creation of approximately 1 FTE job over the same period. Most importantly, by pursuing its mission, the Association communautaire fransaskoise de la Trinité has generated socio-economic benefits equivalent to approximately 2.8 times the expenditures it incurs. This level of social return strongly justifies the allocation of public funds to the Association communautaire fransaskoise de la Trinité.



<b>KEY ACTIVITY/MISSION</b>	The Fédération des francophones de Saskatoon (FFS) is the spokesperson and leader of the Francophones of Saskatoon for the promotion and development of their interests.	
<b>GEOGRAPHIC COVERAGE</b>	Saskatoon	
<b>2021</b>	<b>2022</b>	<b>2023</b>
<b>Expenditures (total) (CAN\$)</b>	<b>Expenditures (total) (CAN\$)</b>	<b>Expenditures (total) (CAN\$)</b>
385,824	191,166	398,109
<b>ECONOMIC IMPACT</b>		
<b>DIRECT, INDIRECT AND INDUCED IMPACT</b>		
<b>GDP (total) (CAN\$)</b>	<b>GDP (total) (CAN\$)</b>	<b>GDP (total) (CAN\$)</b>
453,302	218,099	565,388
<b>FTE jobs</b>	<b>FTE jobs</b>	<b>FTE jobs</b>
3	2	5
<b>Taxation (CAN\$)</b>	<b>Taxation (CAN\$)</b>	<b>Taxation (CAN\$)</b>
28,131	13,535	35,086
<b>Ratio (benefits) (GDP/expenditures)</b>	<b>Ratio (benefits) (GDP/expenditures)</b>	<b>Ratio (benefits) (GDP/expenditures)</b>
1.17	1.14	1.42
<b>SOCIO-ECONOMIC BENEFITS</b>		
<b>2021</b>	<b>2022</b>	<b>2023</b>
<b>Benefits (total) (CAN\$)</b>	<b>Benefits (total) (CAN\$)</b>	<b>Benefits (total) (CAN\$)</b>
1,361,959	651,876	1,437,173
<b>Ratio (socio-economic benefits/ expenditures)</b>	<b>Ratio (socio-economic benefits/ expenditures)</b>	<b>Ratio (socio-economic benefits/ expenditures)</b>
3.53	3.41	3.61

- This study shows that the regardless of their source, the resources allocated to the Fédération des francophones de Saskatoon have been reinvested into the Saskatchewan economy. This is evidenced by benefit ratios ranging from 1.17 to 1.42 over the 3-year period from 2021 to 2023, and by the creation of approximately 4 FTE jobs annually over the same period. Most importantly, by pursuing its mission, the Fédération des francophones de Saskatoon has generated socio-economic benefits equivalent to 3.5 times the expenditures it incurs. This level of social return strongly justifies the allocation of public funds to the Fédération des francophones de Saskatoon.

<b>KEY ACTIVITY/MISSION</b>	The Centre éducatif Gard'amis French cooperative is a charitable organization incorporated under the Saskatchewan Co-operatives Act with the goal of providing French-language daycare services that promote the child's overall development. Its trained and committed staff offer creative and stimulating programming in a safe and welcoming environment.	
<b>GEOGRAPHIC COVERAGE</b>	Regina	
<b>2021</b>	<b>2022</b>	<b>2023</b>
<b>Expenditures (total) (CAN\$)</b>	<b>Expenditures (total) (CAN\$)</b>	<b>Expenditures (total) (CAN\$)</b>
1,461,813	1,520,954	1,604,561
<b>ECONOMIC IMPACT</b>		
<b>DIRECT, INDIRECT AND INDUCED IMPACT</b>		
<b>GDP (total) (CAN\$)</b>	<b>GDP (total) (CAN\$)</b>	<b>GDP (total) (CAN\$)</b>
1,896,466	1,745,903	1,806,439
<b>FTE jobs</b>	<b>FTE jobs</b>	<b>FTE jobs</b>
19	16	21
<b>Taxation (CAN\$)</b>	<b>Taxation (CAN\$)</b>	<b>Taxation (CAN\$)</b>
117,689	108,346	112,102
<b>Ratio (benefits) (GDP/expenditures)</b>	<b>Ratio (benefits) (GDP/expenditures)</b>	<b>Ratio (benefits) (GDP/expenditures)</b>
1.30	1.15	1.13
<b>SOCIO-ECONOMIC BENEFITS</b>		
<b>2021</b>	<b>2022</b>	<b>2023</b>
<b>Benefits (total) (CAN\$)</b>	<b>Benefits (total) (CAN\$)</b>	<b>Benefits (total) (CAN\$)</b>
5,423,326	6,159,864	6,995,886
<b>Ratio (socio-economic benefits/ expenditures)</b>	<b>Ratio (socio-economic benefits/ expenditures)</b>	<b>Ratio (socio-economic benefits/ expenditures)</b>
3.71	4.05	4.36

- This study shows that regardless of their source, the resources allocated to the Centre éducatif Gard'Amis have been reinvested into the Saskatchewan economy. This is evidenced by benefit ratios ranging from 1.30 to 1.13 over the 3-year period from 2021 to 2023, and by the creation of approximately 19 FTE jobs over the same period. Most importantly, by pursuing its mission, the Centre éducatif Gard'Amis has generated socio-economic benefits equivalent to nearly 4.1 times the expenditures it incurs. This level of social return strongly justifies the allocation of public funds to the Centre éducatif Gard'Amis.

<b>KEY ACTIVITY/MISSION</b>	The Centre éducatif Providence La Petite jungle is a Francophone educational centre accredited by the Saskatchewan Ministry of Education. The Centre is authorized to welcome 27 children from 6 weeks to 5 years of age from the communities of Vonda, St. Denis, Prudhomme, Aberdeen, Cudworth and Dana.	
<b>GEOGRAPHIC COVERAGE</b>	Vonda, St. Denis, Prudhomme, Aberdeen, Cudworth and Dana	
<b>2021</b>	<b>2022</b>	<b>2023</b>
<b>Expenditures (total) (CAN\$)</b>	<b>Expenditures (total) (CAN\$)</b>	<b>Expenditures (total) (CAN\$)</b>
285,692	213,485	293,064
<b>ECONOMIC IMPACT</b>		
<b>DIRECT, INDIRECT AND INDUCED IMPACT</b>		
<b>GDP (total) (CAN\$)</b>	<b>GDP (total) (CAN\$)</b>	<b>GDP (total) (CAN\$)</b>
368,897	249,293	341,369
<b>FTE jobs</b>	<b>FTE jobs</b>	<b>FTE jobs</b>
4	2	4
<b>Taxation (CAN\$)</b>	<b>Taxation (CAN\$)</b>	<b>Taxation (CAN\$)</b>
22,893	15,470	21,184
<b>Ratio (benefits) (GDP/expenditures)</b>	<b>Ratio (benefits) (GDP/expenditures)</b>	<b>Ratio (benefits) (GDP/expenditures)</b>
1.29	1.17	1.16
<b>SOCIO-ECONOMIC BENEFITS</b>		
<b>2021</b>	<b>2022</b>	<b>2023</b>
<b>Benefits (total) (CAN\$)</b>	<b>Benefits (total) (CAN\$)</b>	<b>Benefits (total) (CAN\$)</b>
985,637	783,490	1,148,811
<b>Ratio (socio-economic benefits/ expenditures)</b>	<b>Ratio (socio-economic benefits/ expenditures)</b>	<b>Ratio (socio-economic benefits/ expenditures)</b>
3.45	3.67	3.92

- This study shows that regardless of their source, the resources allocated to the Centre éducatif Providence
- La Petite jungle have been reinvested into the Saskatchewan economy. This is evidenced by benefit ratios
- ranging from 1.29 to 1.16 over the 3-year period from 2021 to 2023, and by the creation of approximately
- 4 FTE jobs over the same period. Most importantly, by pursuing its mission, the Centre éducatif Providence
- La Petite jungle has generated socio-economic benefits equivalent to nearly 3.7 times the expenditures
- it incurs. This level of social return strongly justifies the allocation of public funds to the Centre éducatif
- Providence La Petite jungle.



<b>KEY ACTIVITY/MISSION</b>	The Centre éducatif Le Tournesol is a licensed French-speaking daycare centre providing care and supervision for up to 28 children aged 6 weeks to 12 years of age.	
<b>GEOGRAPHIC COVERAGE</b>	Gravelbourg	
<b>2021</b>	<b>2022</b>	<b>2023</b>
<b>Expenditures (total) (CAN\$)</b>	<b>Expenditures (total) (CAN\$)</b>	<b>Expenditures (total) (CAN\$)</b>
137,922	204,302	201,766
<b>ECONOMIC IMPACT</b>		
<b>DIRECT, INDIRECT AND INDUCED IMPACT</b>		
<b>GDP (total) (CAN\$)</b>	<b>GDP (total) (CAN\$)</b>	<b>GDP (total) (CAN\$)</b>
167,981	220,490	209,029
<b>FTE jobs</b>	<b>FTE jobs</b>	<b>FTE jobs</b>
2	2	2
<b>Taxation (CAN\$)</b>	<b>Taxation (CAN\$)</b>	<b>Taxation (CAN\$)</b>
10,424	13,683	12,972
<b>Ratio (benefits) (GDP/expenditures)</b>	<b>Ratio (benefits) (GDP/expenditures)</b>	<b>Ratio (benefits) (GDP/expenditures)</b>
1.22	1.08	1.04
<b>SOCIO-ECONOMIC BENEFITS</b>		
<b>2021</b>	<b>2022</b>	<b>2023</b>
<b>Benefits (total) (CAN\$)</b>	<b>Benefits (total) (CAN\$)</b>	<b>Benefits (total) (CAN\$)</b>
532,379	898,929	948,300
<b>Ratio (socio-economic benefits/ expenditures)</b>	<b>Ratio (socio-economic benefits/ expenditures)</b>	<b>Ratio (socio-economic benefits/ expenditures)</b>
3.86	4.40	4.70

- This study shows that regardless of their source, the resources allocated to the Centre éducatif Le Tournesol have been reinvested into the Saskatchewan economy. This is evidenced by benefit ratios ranging from 1.22 to 1.04 over the 3-year period from 2021 to 2023, and by the creation of approximately 2 FTE jobs annually over the same period. Most importantly, by pursuing its mission, the Centre éducatif Le Tournesol has generated socio-economic benefits equivalent to nearly 4.4 times the expenditures it incurs. This level of social return strongly justifies the allocation of public funds to the Centre éducatif Le Tournesol.



<b>KEY ACTIVITY/MISSION</b>	The Centre éducatif Les petits pois is a licensed Francophone daycare centre providing care and supervision for up to 20 children aged 6 weeks to 12 years of age.	
<b>GEOGRAPHIC COVERAGE</b>	Bellevue	
<b>2021</b>	<b>2022</b>	<b>2023</b>
<b>Expenditures (total) (CAN\$)</b>	<b>Expenditures (total) (CAN\$)</b>	<b>Expenditures (total) (CAN\$)</b>
169,495	228,701	295,710
<b>ECONOMIC IMPACT</b>		
<b>DIRECT, INDIRECT AND INDUCED IMPACT</b>		
<b>GDP (total) (CAN\$)</b>	<b>GDP (total) (CAN\$)</b>	<b>GDP (total) (CAN\$)</b>
219,365	289,934	394,219
<b>FTE jobs</b>	<b>FTE jobs</b>	<b>FTE jobs</b>
2	3	4
<b>Taxation (CAN\$)</b>	<b>Taxation (CAN\$)</b>	<b>Taxation (CAN\$)</b>
13,613	17,992	24,464
<b>Ratio (benefits) (GDP/expenditures)</b>	<b>Ratio (benefits) (GDP/expenditures)</b>	<b>Ratio (benefits) (GDP/expenditures)</b>
1.29	1.27	1.33
<b>SOCIO-ECONOMIC BENEFITS</b>		
<b>2021</b>	<b>2022</b>	<b>2023</b>
<b>Benefits (total) (CAN\$)</b>	<b>Benefits (total) (CAN\$)</b>	<b>Benefits (total) (CAN\$)</b>
608,487	850,768	1,191,711
<b>Ratio (socio-economic benefits/ expenditures)</b>	<b>Ratio (socio-economic benefits/ expenditures)</b>	<b>Ratio (socio-economic benefits/ expenditures)</b>
3.59	3.72	4.03

- This study shows that regardless of their source, the resources allocated to the Centre éducatif Les petits pois have been reinvested into the Saskatchewan economy. This is evidenced by benefit ratios ranging from 1.29 to 1.33 over the 3-year period from 2021 to 2023, and by the creation of approximately 3 FTE jobs annually over the same period. Most importantly, by pursuing its mission, the Centre éducatif Les petits pois has generated socio-economic benefits equivalent to nearly 3.8 times the expenditures it incurs. This level of social return strongly justifies the allocation of public funds to the Centre éducatif Les petits pois.



<b>KEY ACTIVITY/MISSION</b>	The Centre éducatif Pomme d'api offers 28 full-time, government-subsidized spaces. Located in the heart of Moose Jaw in the École Ducharme community centre.	
<b>GEOGRAPHIC COVERAGE</b>	Moose Jaw	
<b>2021</b>	<b>2022</b>	<b>2023</b>
<b>Expenditures (total) (CAN\$)</b>	<b>Expenditures (total) (CAN\$)</b>	<b>Expenditures (total) (CAN\$)</b>
317,377	321,614	382,901
<b>ECONOMIC IMPACT</b>		
<b>DIRECT, INDIRECT AND INDUCED IMPACT</b>		
<b>GDP (total) (CAN\$)</b>	<b>GDP (total) (CAN\$)</b>	<b>GDP (total) (CAN\$)</b>
404,005	394,692	490,830
<b>FTE jobs</b>	<b>FTE jobs</b>	<b>FTE jobs</b>
4	4	5
<b>Taxation (CAN\$)</b>	<b>Taxation (CAN\$)</b>	<b>Taxation (CAN\$)</b>
25,071	24,493	30,459
<b>Ratio (benefits) (GDP/expenditures)</b>	<b>Ratio (benefits) (GDP/expenditures)</b>	<b>Ratio (benefits) (GDP/expenditures)</b>
1.27	1.23	1.28
<b>SOCIO-ECONOMIC BENEFITS</b>		
<b>2021</b>	<b>2022</b>	<b>2023</b>
<b>Benefits (total) (CAN\$)</b>	<b>Benefits (total) (CAN\$)</b>	<b>Benefits (total) (CAN\$)</b>
1,155,252	1,222,133	1,585,210
<b>Ratio (socio-economic benefits/ expenditures)</b>	<b>Ratio (socio-economic benefits/ expenditures)</b>	<b>Ratio (socio-economic benefits/ expenditures)</b>
3.64	3.80	4.14

- This study shows that regardless of their source, the resources allocated to the Centre éducatif Pomme d'api have been reinvested into the Saskatchewan economy. This is evidenced by benefit ratios ranging from 1.27 to 1.28 over the 3-year period from 2021 to 2023, and by the creation of approximately 5 FTE jobs annually over the same period. Most importantly, by pursuing its mission, the Centre éducatif Pomme d'api has generated socio-economic benefits equivalent to nearly 3.9 times the expenditures it incurs. This level of social return strongly justifies the allocation of public funds to the Centre éducatif Pomme d'api.

# Acknowledgments

We would like to thank the entire team involved in supervising and conducting the study and translating the final report of this RAIF Socio-economic Impact Study into English:

- **Study supervision:**

Jean de Dieu Ndayahundwa, Community Economic Development and Entrepreneurship Manager at CÉCS.

- **Study conducted by:**

Étude Économique Conseil (EEC Canada).

- **Translation of the final report:**

With the support of the Francophone Affairs Branch (FAB) of Saskatchewan's Ministry of Parks, Culture and Sport.



Développement économique  
Canada pour les Prairies

Prairies Economic  
Development Canada



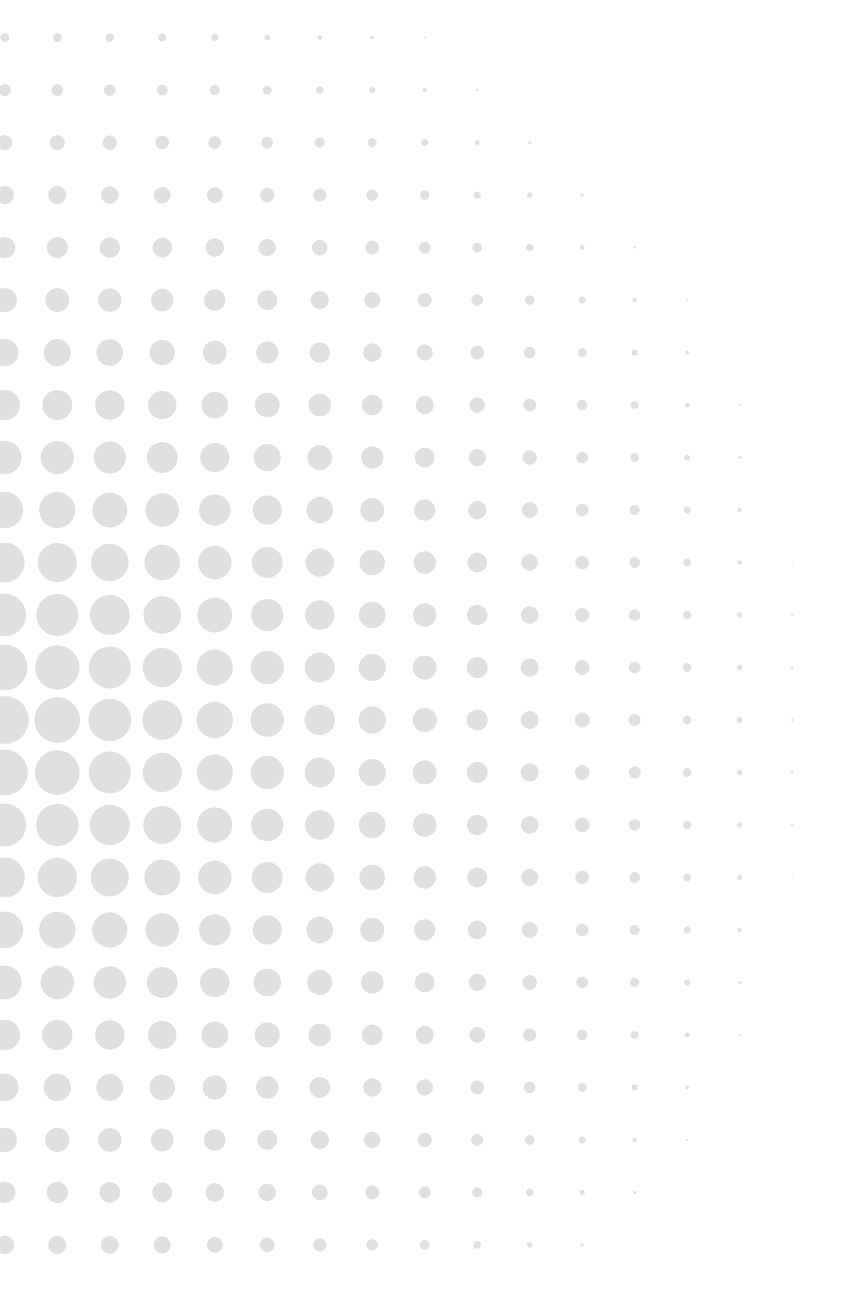
Emploi et Développement  
social Canada

Employment and Social  
Development Canada









## CÉCS Offices

### Head Office – Regina

205-1440 9<sup>th</sup> Avenue North  
Regina, SK S4R 8B1  
Tel.: 306-566-6000  
Toll-free: 1-800-670-0879

### Saskatoon Office

202-308 4<sup>th</sup> Avenue North  
Saskatoon, SK S7K 2L7  
Tel.: 306-244-4916

### Moose Jaw Office

88 Saskatchewan Street East  
Moose Jaw, SK S06 0V4  
Tel.: 873-376-8809


[www.cecs-sk.ca](http://www.cecs-sk.ca)

 [facebook.com/conseilcoopsk](https://facebook.com/conseilcoopsk)

 [x.com/cecs\\_sk](https://x.com/cecs_sk)

 [linkedin.com/company/cecs-sask](https://linkedin.com/company/cecs-sask)

 [instagram.com/cecs\\_sk](https://instagram.com/cecs_sk)

 [youtube.com/user/conseilcoopsk/videos](https://youtube.com/user/conseilcoopsk/videos)